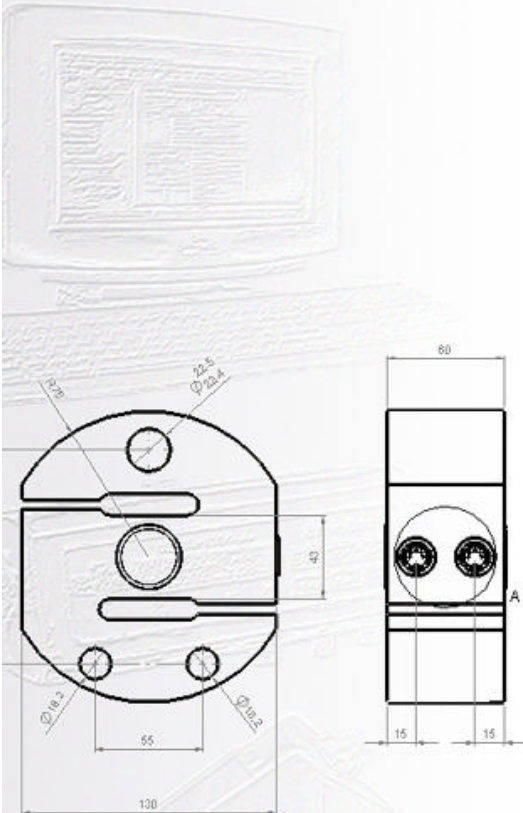
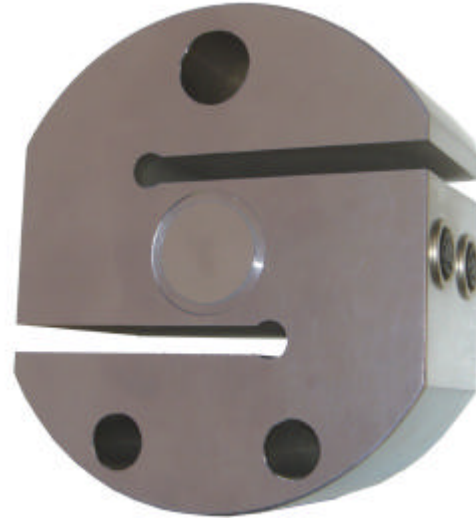


S Type Load cell 12 tonnes



ST-12T-CA
ST-12T-SA
ST-12T-CD
ST-12T-SD

Model	ST: S type
Capacity	12T: 12,000 kg
Material	C: Carbon Alloy Steel S: Stainless Steel 17-4 ph
Type	A: Analogue D: Digital
Temperature Range	-40 to +70°C
Safe Overload	150%
Maximum Overload	300%
Cable	A: 10 metre screened (33 feet) D: Connector
Ingress Protection	Sealed to IP68
Excitation	
Recommended	10V to 12V dc
Maximum	15V
Output at rated load	A: 2 mV/V \pm 0.1% D: Weightel digital Protocol
Accuracy	Plus or minus 0.01 %

Griffith Elder and Company Ltd

1 Oaklands Park
Bury St Edmunds
Suffolk
IP33 2RW
United Kingdom

Telephone: +44 1284 763616
Fax: +44 1284 700822
Email: sales@griffith-elder.com
Internet: www.griffith-elder.com

Digital Load Cells use the Weightel™ Plug-and-Weigh™ Technology for ease of installation and maximum accuracy. They are factory calibrated.

ST 12 tonne