



Recording Equipment

A choice of indicators is available depending on which options are selected for use with the weighbridge. The simplest system is a standard model 2100 indicator with a printout on a tally roll or a four part ticket. The model 5230 allows input of number plates and tare weights so that a print will give tare, gross and nett weights together with date and time and unique ticket number.



Computer Program

Both indicators can be connected directly to a PC computer with full database Ton-Tel™ software. This is the normal option for today's weighbridges. The computer gives the operator a full database system with the ability to record the details at the time of weighing and hence allows detailed reports to be made or print outs of invoices and lists of all transactions and vehicles for a particular customer. Software is also available for recording and detailing of overloading. There are several programs available for different industries from grain storage systems to recycling enterprises. All the software is configurable to suit individual business needs using our own in-house software engineers at very little extra cost to a standard package.



Printers

There are three printers available for use with the standard indicators. If a computer is used then tickets can be printed direct from the computer software.

The basic printout is on a tally roll, with extra copies being available by pressing the print again. For a more sophisticated ticket we supply a four part ticket printer which takes pre-printed tickets which have your name and address on them. This is useful if a number of personnel need a ticket each time the weighbridge is used.

Externally a tally roll printer is available which is housed in a weather proof enclosure so that a driver can take a ticket without getting out of the vehicle. This is particularly useful for unmanned weighbridge installations.

Griffith Elder and Company Ltd
1 Oaklands Park
Bury St Edmunds
Suffolk
IP33 2RW
United Kingdom

Telephone: +44 1284 763616
Fax: +44 1284 700822
Email: sales@griffith-elder.com
Internet: www.griffith-elder.com

Ton-Tel™ Truck Scale Options



Steel Ramps

Made to suit the system these ramps are both robust and easy to install. Where a weighbridge is being put onto existing concrete without new foundations the steel ramps are a useful way of completing the weighbridge and make moving to a new site a very quick and easy task.

Traffic Lights

A red cross shows the vehicle when to stop and a green arrow shows a driver when to move onto and leave the weighbridge. Traffic lights can be automatically controlled from computer software or can be manned by an operator for ease of traffic management. They are often used in conjunction with the automatic identification systems for unmanned weighbridges.

Large Display

A large red LED display (scoreboard) with 120 mm high digits is available so that the truck drivers can see at a glance what their weight is. The display has high visibility even in the brightest sun light.

Automatic number plate recognition

For the ultimate in automatic operation, a camera can be strategically placed to capture number plates. This ensures that every vehicle entering the weighbridge will be logged in the computer database. The camera software communicates with the weighbridge software so that vehicle identification is coupled with the weights on the ticket.

Keypad at weighbridge

A keypad can be put at the weighbridge for driver entry of details. Typically this is used in un-manned weighbridges where the details of the goods being carried need to be typed in by the driver. This saves the driver getting out of the truck. The display is menu driven for ease of use.



Griffith Elder and Company Ltd
1 Oaklands Park
Bury St Edmunds
Suffolk
IP33 2RW
United Kingdom

Telephone: +44 1284 763616
Fax: +44 1284 700822
Email: sales@griffith-elder.com
Internet: www.griffith-elder.com

Ton-Tel™ Truck Scale Options



Automatic Barriers

A barrier can be positioned before and after the weighbridge to give a driver a strong signal that they must stop and wait to be admitted. Often these are used in conjunction with an external keypad or identification system so that only after a routine has been completed will the vehicle be allowed onto the weighbridge.

Infra red detector

Sometimes it is more convenient to have a detector at the exit of the weighbridge instead of a barrier. The detector will not allow a weight to be taken if the vehicle is overhanging the end of the platform. If a light is coupled into the detector the driver can see that the vehicle needs to be repositioned in order for a weight to be captured.

Automatic Identification

Vehicles and drivers can have their own transponder tags so that they are immediately identified as they go onto the weighbridge. This is useful if the same trucks are returning time after time. Modern tags are electronic and can be in the form of credit cards or key fobs which are identified when they come into proximity of a reader. The distance a tag can be read is usually in the region of 200 mm, so the driver can wave a tag out of the window and be picked up by the reader.

Kiosk

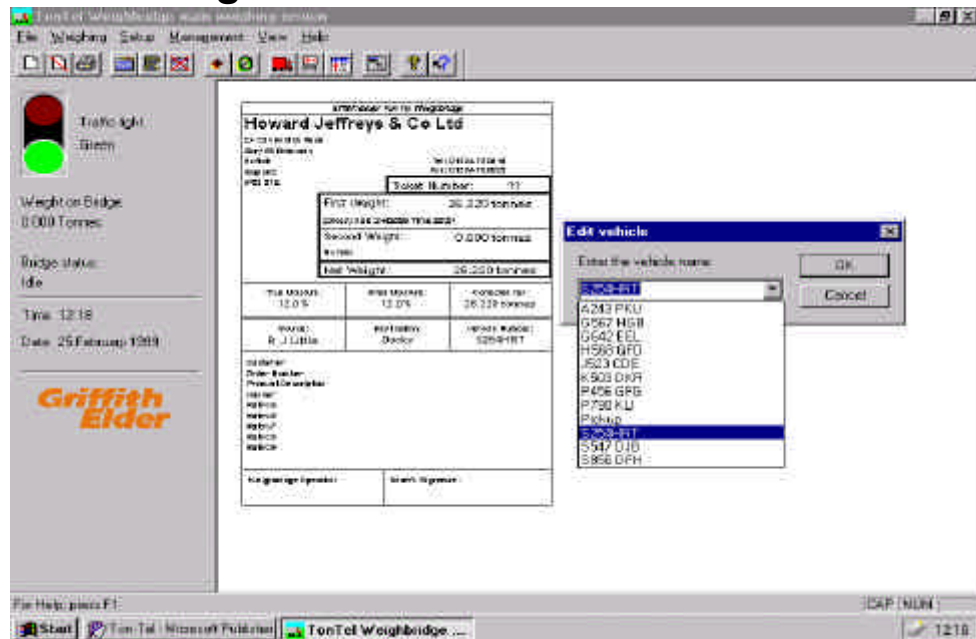
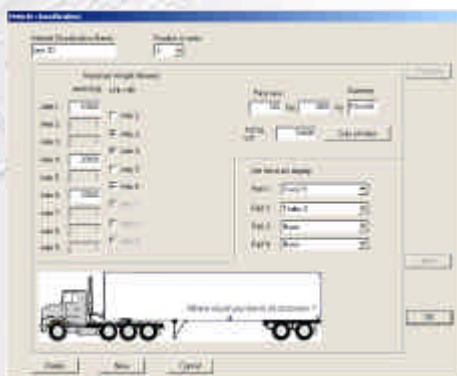
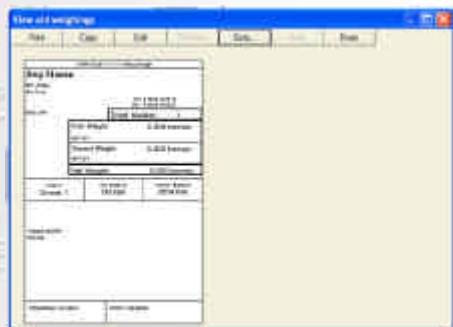
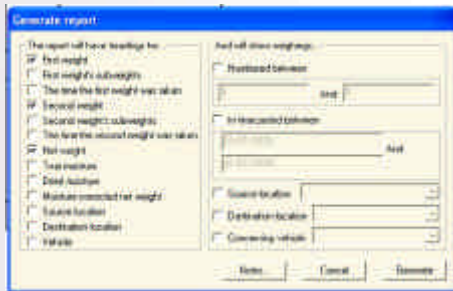
A weighbridge kiosk can be provided to house the electronic indicator and printer equipment. Usually this will have appropriate windows so that an operator can see the whole weighbridge from the kiosk.

Safety Guide Rails

Normally if safety rails are required they are bolted to the ground alongside the weighbridge so that they do not form part of the weighing platform. These are only required where a weighbridge is being used in a situation where the drop off the platform is too large. Sometimes it is prudent to put rails along gyhr sides to direct traffic centrally over a weighbridge installed in a pit.

Griffith Elder and Company Ltd
1 Oaklands Park
Bury St Edmunds
Suffolk
IP33 2RW
United Kingdom

Telephone: +44 1284 763616
Fax: +44 1284 700822
Email: sales@griffith-elder.com
Internet: www.griffith-elder.com



The Ton-Tel™ Weighbridge Computer Software is a powerful yet easy to use system for recording and analysing all weighbridge operations. There are two very different software designs, one for management of vehicles in commercial businesses and another for law enforcement which is used for recording of vehicles on the highways, usually associated with over-loading.

Transport Management

The transport management programme monitors goods in and out and can be used to monitor stock levels and record all vehicle movements. The Ton-Tel™ software can be customised to suit individual customer requirements. A number of different ticket options are available, and there are user definable note headings for additional information.

Law Enforcement

The law enforcement program shows a ticket with the all the relevant information needed for monitoring and controlling vehicle weights on the highway. Additional information concerning each weighing can be easily entered using the drop down boxes. For Single Axle Weighbridges, the individual axle weights are also recorded.

Reports

The Ton-Tel™ software system contains a powerful reporting facility. The operator selects the parameters for the report, and the information to be shown. A typical report might be of all the weighments which went to a particular customer between two dates or all the movements over the weighbridge for the last week.

Information can easily be exported from the Ton-Tel™ programme to other programmes for further data analysis. It is compatible with all spreadsheets. Networking is also possible so that real time weighing information can be seen at another location.

All weighing operations are automatically recorded on the computer and tickets can be printed off on the computer's printer.

Griffith Elder and Company Ltd
 1 Oaklands Park
 Bury St Edmunds
 Suffolk
 IP33 2RW
 United Kingdom

Telephone: +44 1284 763616
 Fax: +44 1284 700822
 Email: sales@griffith-elder.com
 Internet: www.griffith-elder.com