

Ton-Tel Multi-Axle Weighbridge



Truck on 7.8 metre platform

Weightel™ digital load cells available in different sizes

Plug-And-Weigh™ Proven reliability **Weightel™ digital load cells for maximum accuracy** **Choice of indicators and software to suit the application**

The Ton-Tel is a fast and accurate weighing system which will weigh any type of vehicle regardless of its length or the number of axles. A vehicle drives onto the platform and a red traffic light shows when to stop. The light turns green to show when to move on to the next axles. Weighing of each group of axles is automatic and the driver does not need to get out of the cab until the vehicle has been fully weighed.

The heavy duty construction of the Split-Weigh weighbridge is designed to work in harsh conditions and is particularly suited to use in mines and on farms where reliability and ease of use are essential requirements. The platform is made from a welded steel superstructure with a durbar surface plate for maximum strength.

Plug-And-Weigh™ technology with factory calibrated Weightel™ digital load cells means that set-up time on site is minimal. No special tools are needed to install the weighbridge system. Usually no site calibration is necessary. The sophisticated electronic circuits have been sealed against the elements to ensure a long and trouble free life.

Civil Works

There are two essential rules for obtaining accurate weights when split weighing a vehicle, namely: a) the weighing platform must be recessed into the ground at a prepared site and b) the approach and exit to the weighing platform need to be level for approximately the length of the longest vehicles being weighed. Typically the concrete approach and exit should each be 10 metres long so that vehicles can be weighed in both directions.

We supply a pit frame to simplify construction and ensure that the weighbridge is located correctly.

Griffith Elder recognise that the site of a weighbridge is of prime consideration and so we offer an advisory service for location, backed up by easy to follow instructions and technical assistance.

Our civil engineering team are able to provide a complete turn-key package if required, undertaking all aspects of the installation and commissioning.



Griffith Elder and Company Ltd
1 Oaklands Park
Bury St Edmunds
Suffolk
IP33 2RW
United Kingdom

Telephone: +44 1284 719619
Fax: +44 1284 700 822
Email: sales@griffith-elder.com
Website: www.griffith-elder.com

The Split-Weigh System

Low maintenance, long service life



Tractor on 6.0 metre platform



Operation

Split weighing groups of axles is an established method of accurately weighing a vehicle and is the basis of the Ton-Tel split-weigh system. Small vehicles are weighed in one go, bigger trucks and tractors and trailers are weighed in two parts, whilst large vehicles such as articulated lorries are weighed in three.

As a vehicle drives onto the weighbridge it is controlled by traffic lights which show the driver when to stop and when to move forwards. The weight of each group of axles is automatically captured in just three seconds. Then, when the weighing is complete, these individual weights are automatically added together to give the total weight of the vehicle.

Installation

The factory calibrated weighbridge comes ready to install into a pre-prepared pit. If the framework provided by us is used then the weighbridge platform will go straight into the pit without any special tools to complete the operation.

A signal cable runs from the platform to the indicator or computer. Plug the cable in and the system is ready to be used.



Large Display

The weight of the axles can be shown on a large external display with 120 mm high red LED digits making the information visible to the driver immediately. At the end of the weighing the display will show the gross weight of the vehicle. The large display is fully waterproof. The display shows zero when the platform is idle and shows a row of dashes when an error is detected.

Recording Equipment

A choice of indicators is available or connect direct to a PC with full software. This is the normal option for today's weighbridges. The computer gives the operator a full database system with the ability to record the details at the time of weighing and hence allows detailed reports to be made or print outs of invoices and lists of all transactions and vehicles for a particular customer.

Software is also available for recording and detailing the dried down weights of agricultural grain crops.

Griffith Elder and Company Ltd
1 Oaklands Park
Bury St Edmunds
Suffolk
IP33 2RW
United Kingdom

Telephone: +44 1284 719619
Fax: +44 1284 700 822
Email: sales@griffith-elder.com
Website: www.griffith-elder.com

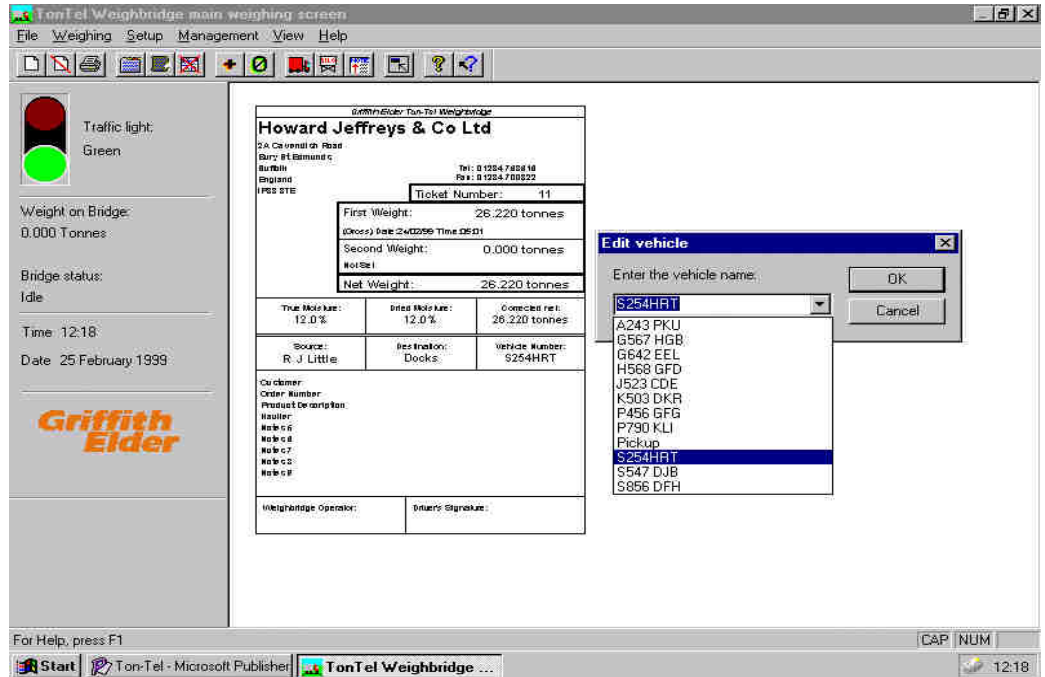
Multi-Axle Weighbridge Specifications



Platform Sizes:	4.0 metres long by 3.0 metres wide 6.0 metres long by 3.0 metres wide 7.8 metres long by 3.0 metres wide
Maximum Weight on Platform:	30 tonnes or 60 tonnes
Maximum Total Vehicle Weight:	250 tonnes.
Static accuracy:	+/- 20 kg.
Indicator resolution:	10 kg.
Speed of operation:	Automatic static weighing system. Weighing an articulated truck with three sets of axles takes typically 17 to 20 seconds.
Power requirements:	110/220 v ac; 50/60 hz. Or 12 volts DC. Can be run from solar panel
Platform type:	Composite welded construction, mild steel with Durbar plate surface, epoxy coated.
Loadcells:	12 tonnes or 20 tonnes capacity each, welded caps, Sealed to IP68.
Electronics:	Microprocessor weighing control sealed to IP68.
Approach and exit roadways:	10 metres (recommended).
Operating temperature range:	-30°C to +70°C
Computer Software Options:	Transport Management software Agricultural software

Griffith Elder and Company Ltd
1 Oaklands Park
Bury St Edmunds
Suffolk
IP33 2RW
United Kingdom

Telephone: +44 1284 719619
Fax: +44 1284 700 822
Email: sales@griffith-elder.com
Website: www.griffith-elder.com



Grain Lorry on 4.0 metre platform

The Ton-Tel Weighbridge Computer Software is a powerful yet easy to use system for recording and analysing all weighbridge operations. The program also monitors stock levels and records all vehicle movements.

The above screen-print shows the weighing screen. All Weighing operations are automatically recorded on the computer and tickets can be printed off on the computer's printer. Additional information concerning each weighing can be easily entered using the drop down boxes. For Multi Axle Weighers, the individual axle weights may also be recorded if required.

Reports

The system contains a powerful reporting facility. The operator selects the parameters for the report, and the information to be shown. A typical report might be of all the weighings, which went to a particular customer between two dates.

Information can easily be exported from the Ton-Tel programme to other programmes for further data analysis. It is compatible with all spreadsheets.

The Ton-Tel software can be customised to suit individual customer requirements. A number of different ticket options are available, which can be set up by the user.

The programme contains a moisture correction feature which is used when weighing a moist product such as wet grain. The operator enters the moisture content of the product, and the programme calculates its dried weight.

A facility also exists for containers being transported in and out, so that individual container weights can be put in and the number of containers in and out recorded, hence correcting the net weight for differences.

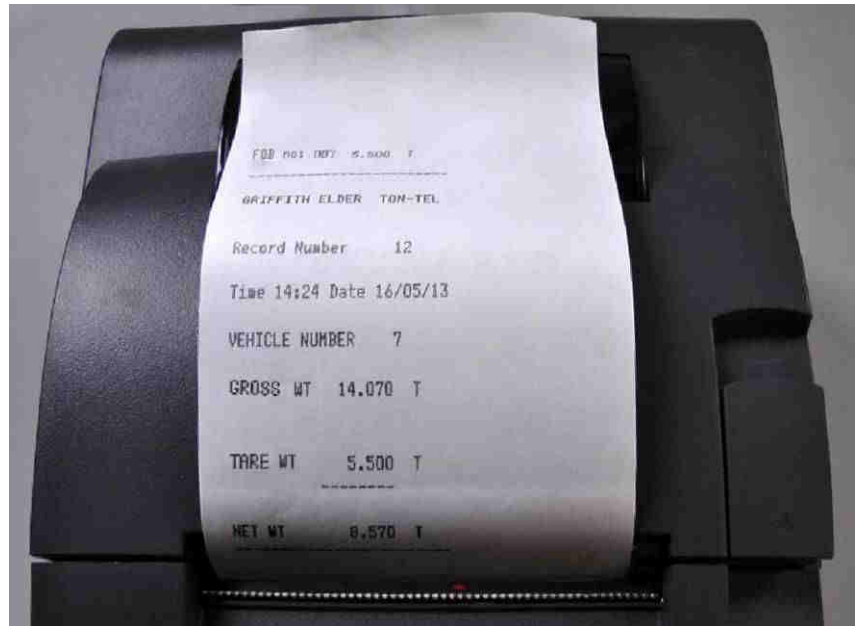
The Ton-Tel program works on Microsoft Windows XP and Windows 7 operating environments.



Griffith Elder and Company Ltd
 1 Oaklands Park
 Bury St Edmunds
 Suffolk
 IP33 2RW
 United Kingdom

Telephone: +44 1284 719619
 Fax: +44 1284 700 822
 Email: sales@griffith-elder.com
 Website: www.griffith-elder.com

Indicators and Printers For Multi-Axle Weighbridges



WB4 Desktop Indicator

- Automatically captures each part weight
- Shows individual part vehicle weights
- Saves part weights and total weight in memory
- Saves the record automatically after weights are caught
- Gives a sequential ticket number for each record
- Date and time stamps each record
- Automatically changes traffic light when catching weights
- Sends part weights and total to Large Display
- Runs from 12 volts DC
- Allows recall of old records from memory
- RS232 serial output to printer
- Computer output in real time compatible with Ton-Tel Software



WB5 Desktop Indicator

- Has automatic and manual modes
- In automatic has variable timeout before totalising
- In manual part weights caught by pressing a button
- Allows shunting of vehicle before part weight is caught
- Shows individual part vehicle weights
- Saves part weights and total weight in memory
- Saves the record automatically after totalising
- Gives a sequential ticket number for each record
- Date and time stamps each record
- Automatically changes traffic light when catching weights
- Sends part weights and total to Large Display
- Runs from 12 volts DC
- Allows recall of old records from memory
- RS232 serial output to printer
- Computer output in real time compatible with Ton-Tel Software
- WB5 is the normal choice for Law Enforcement



Indicators and Printers For Multi-Axle Weighbridges



WB6 Desktop Indicator

- As the WB4 indicator, plus:
- Has memory for 10 vehicle tare weights which are set before using weighbridge by manual entry
- Stores part weights plus gross, tare and net weight
- Saves a record automatically with gross, tare and net weights with date and time and ticket number.

WB4-PP, WB5-PP and WB6-PP Portable Indicator with Printer

- Does exactly the same as the WB4, WB5, or WB6 desktop indicator, except it has a built-in printer and runs from its own internal battery.
- All housed in a waterproof suitcase. Records can be saved to a USB memory stick
- Records can be saved to a USB memory stick

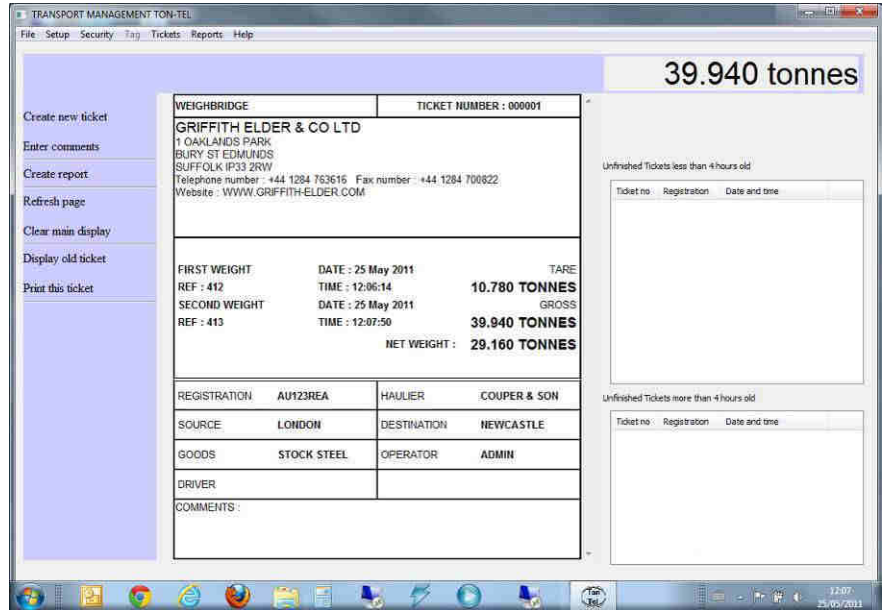


WB6-RF Portable Indicator with Printer

- Does exactly the same as the WB6 desktop indicator, except it has a built-in printer and runs from its own internal battery, all housed in a waterproof suitcase.
- Additionally, the WB6-RF includes a plug-in antenna so that the vehicle recognition is automatic and the driver can stay in the vehicle.
- The records and tickets will be produced automatically for gross, tare and net weights. The net weight will also automatically be added to a batch total.
- The batch total can be saved and printed out to start a new batch.
- 3 fobs are provided as standard
- Extra fobs, for more vehicles, can be purchased separately. The maximum number of vehicles is 100.
- Records can be saved to a USB memory stick

Griffith Elder and Company Ltd
1 Oaklands Park
Bury St Edmunds
Suffolk
IP33 2RW
United Kingdom

Telephone: +44 1284 719619
Fax: +44 1284 700 822
Email: sales@griffith-elder.com
Website: www.griffith-elder.com



Desktop Printer

- Sits on the desk and prints out from the indicator automatically when a record gets saved.

Traffic Light

- Choice of two models, single row or triple row of LEDs
- Red Cross, Green arrow
- Tells operator when to move forwards
- Runs from 12 volts DC
- Single row LEDs reduces power required from battery

Large Display

- Choice of two models, single row or double row of LEDs
- Waterproof stainless steel housing
- Allows the driver to see the weights
- 120 mm high red numerals on black background, double row of LEDs
- 75 mm high red numerals on black background, single row of LEDs reduces power required from battery
- Runs from 12 volts DC

Software

- **Truck Management Software:** Full database which can be custom designed to include truck license, source, destination, commodity, and all other information needed on the ticket. Custom reports. Easy to use.
- **Agricultural Storage Software:** Similar to the Truck Management Software plus Moisture input and correction of weight for each crop. Three levels available
- **Overload Protection Software:** For use with highway weighbridges for the classification of vehicles and the calculation of fines for overloaded axles and gross weights.



Griffith Elder and Company Ltd
1 Oaklands Park
Bury St Edmunds
Suffolk
IP33 2RW
United Kingdom

Telephone: +44 1284 719619
Fax: +44 1284 700 822
Email: sales@griffith-elder.com
Website: www.griffith-elder.com