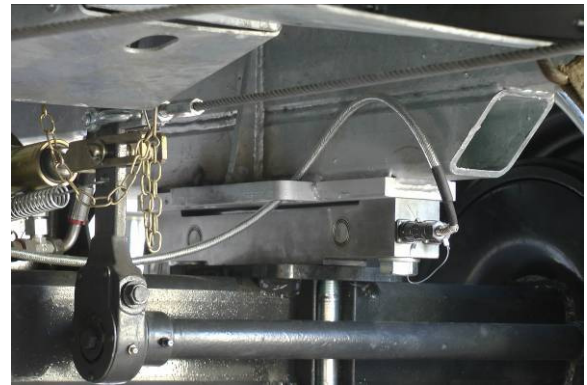


# ONBOARD WEIGHING

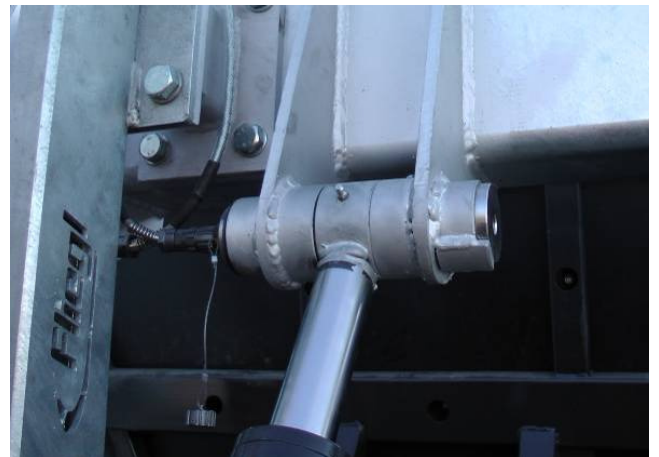
*Accurate weighing on the move*

## Fliegl

### Fliegl Trailers



### The Fliegl push-off spreader



Two weigh-pins mounted at the top of the drawbar dampers    Close up on one of the Load Cell Pins



# DAF Recycling Truck



Load Cells mounted between truck chassis and body



Close up on one load cell

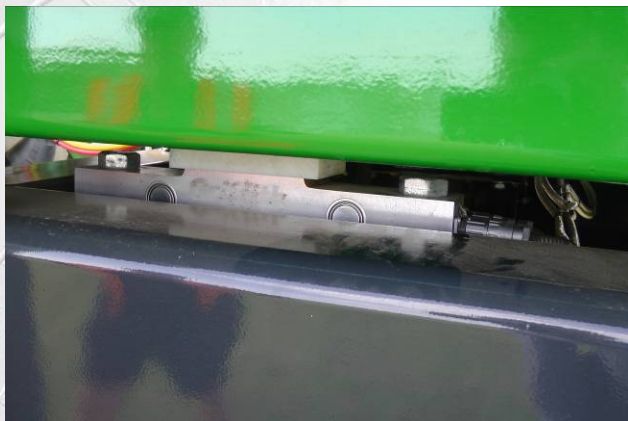
## AW Trailers



Tipping Trailers

Trailer body rests onto chassis mounted load cells

Body pivots on load cell pins





# Bunning Spreader



Two 20 tonne Load cells mounted between axle and body      Two more Load cells on the drawbar



Close-up of the two 20 tonne double ended shear-beam load cells mounted on the drawbar

# Tebbe Spreader



Tebbe 40 tonne spreader with load cells between chassis and body



Close-up of 12 tonne shear-beam load cell mounted to the chassis

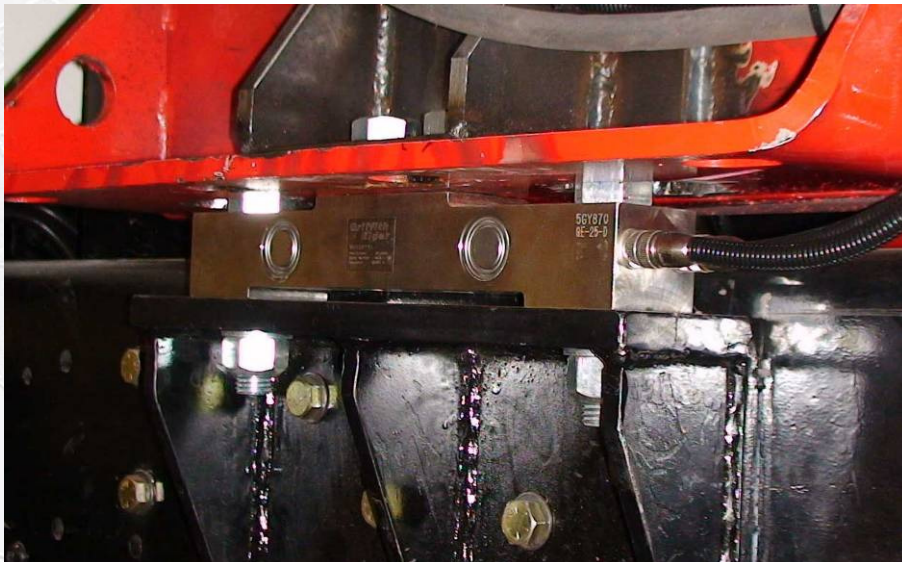
6 load cells used on this large spreader



# Roda Spreader



Roda Spreader with double ended shear-beam load cells between body and chassis



Close-up of 20 tonne double ended shear beam load cell mounted on the chassis

Four load cells used on this muck spreader



# AGCO Terra-Gator Spreader



Agchem bodied Terra-Gator manure spreader with 12 tonne shear-beam load cells between body and chassis



Four 12 tonne shear-beam load cells mounted to the chassis